

Phase III

Virtual Community Meeting

WELCOME • BIENVENIDOS

Agenda

- Team Introductions
- Project Overview
- What we have learned?
- Community Feedback
- Next Steps



Today's Conversation

Conversation Goals



Listen to your ideas and stories



Gather your vision for Phase III



Hold a safe space for all community members

Let the conversations begin!



We will be sharing current photos of Waller Creek from 4th–12th street



Collecting your input on what you envision based on various topics

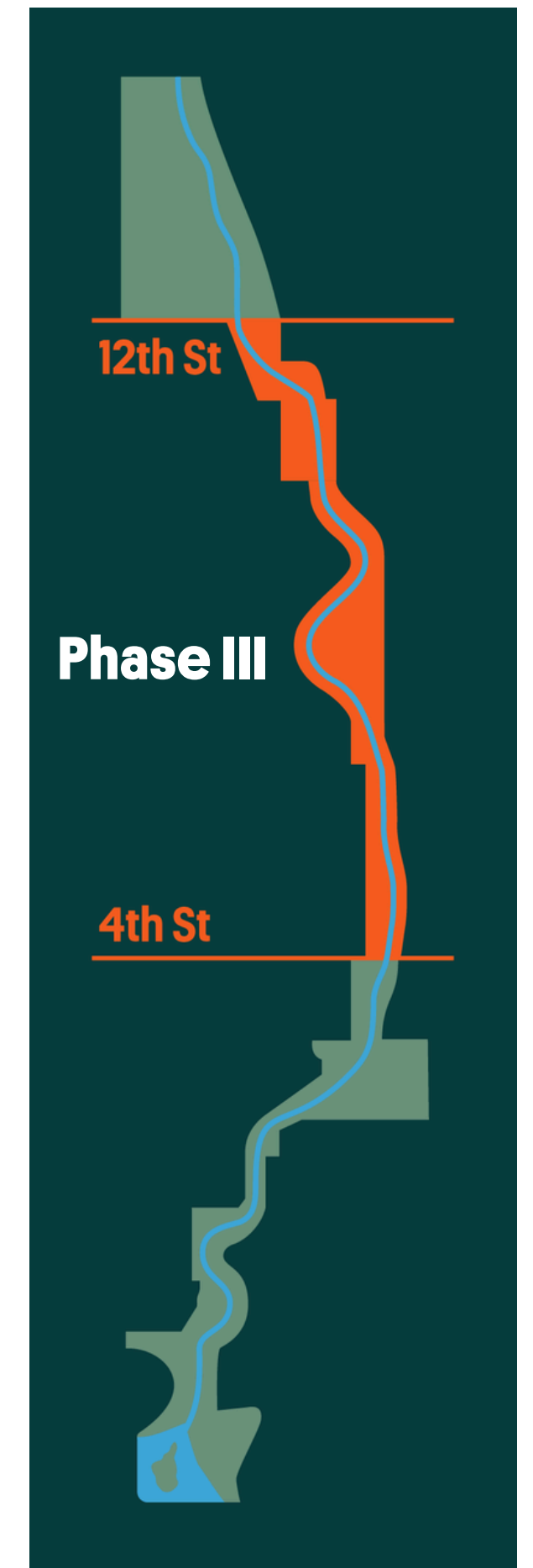


Feel free to add your questions in the chat, we will see your LIVE voting

Project Overview

Waterloo Greenway Phase III: 4th to 12th Street will complete a 1.5-mile, universally accessible trail along Waller Creek, creating a continuous north-south green corridor through downtown Austin. Connecting Waterloo Park near the University of Texas and State Capitol to The Confluence and Lady Bird Lake.

This phase links entertainment, jobs, dining, and cultural destinations—expanding safe, car-free options for getting around while enhancing nature for residents and visitors alike.



What We Heard That Will be Addressed

- Restore Waller Creek to a healthy, thriving ecosystem.
- Address public safety concerns so that the space is welcoming for all.
- Create a universally accessible urban trail for bikes and pedestrians.
- Connect to adjacent destinations and businesses, day and night.
- Honor the history and culture of the area.
- Stitch together a district that connects: UT, the Innovation Zone, Red River Cultural District, Historic 6th Street District, 5th Street Mexican American Heritage Corridor, Downtown Rail Station, Austin Convention Center, Rainey Street District, and more.

Phase 2: The Confluence



Phase 3: 4th-12th St.

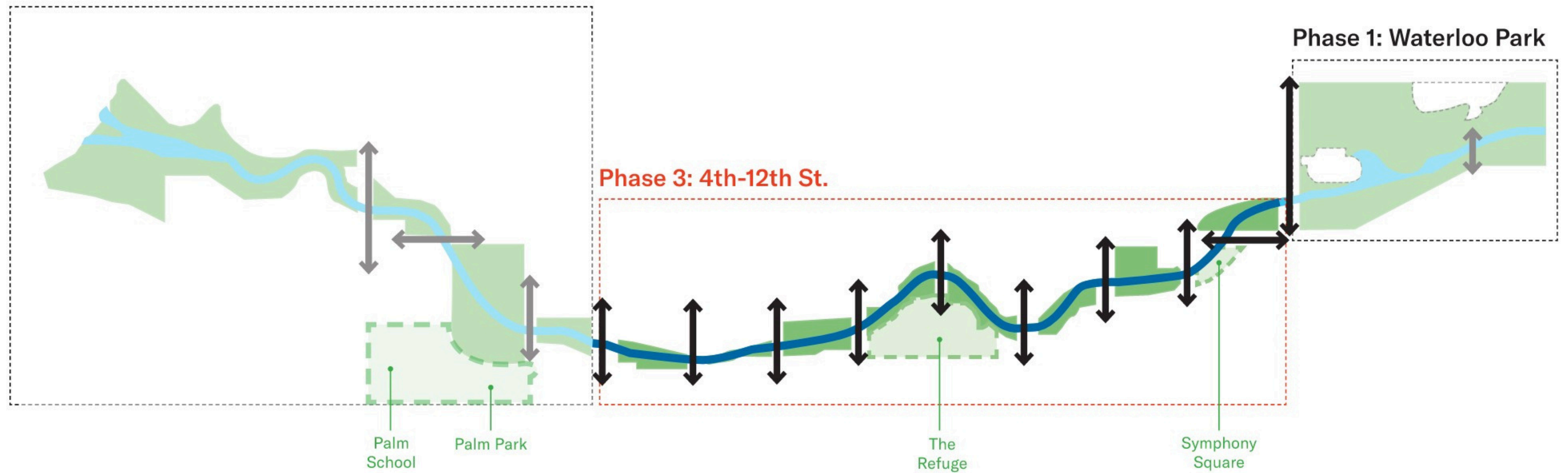


Phase 1: Waterloo Park



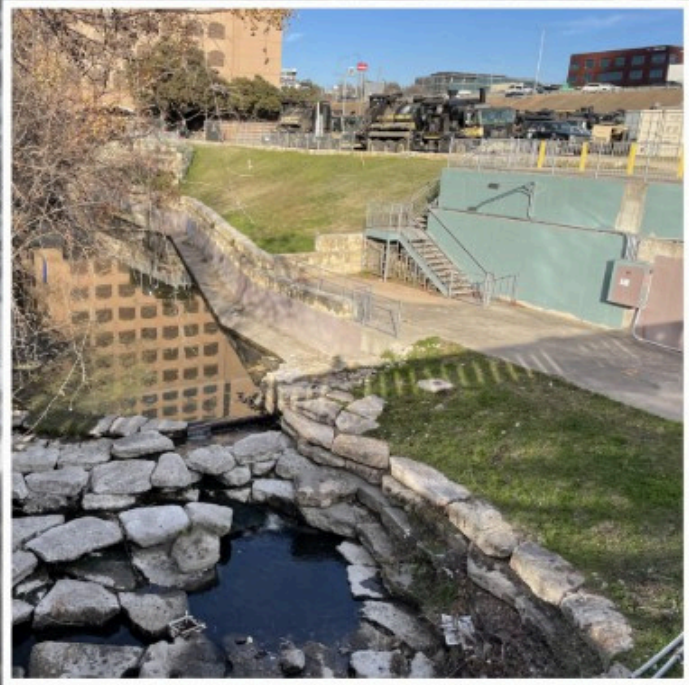
Threading the Needle

Phase 2: The Confluence

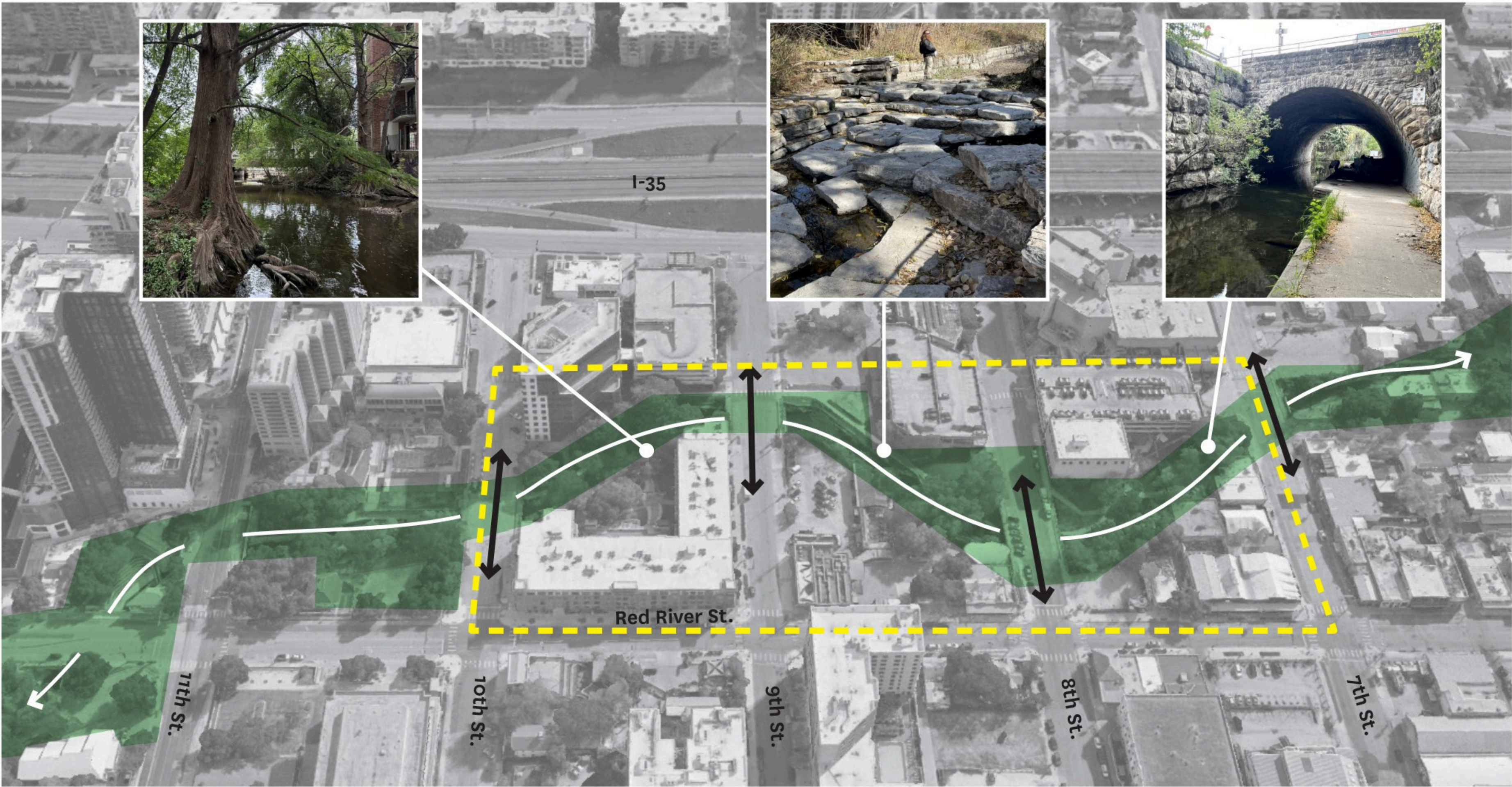


Waterloo Greenway 4th-12th St.
Subareas Defined by their Existing Character

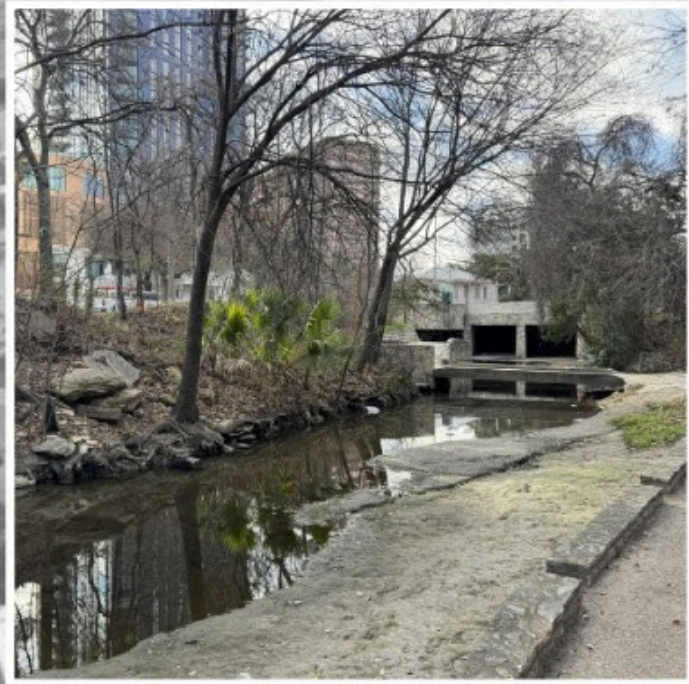




7th-4th St.



7th-10th St.



10th-12th St.

12th St.

11th St.

10th St.

9th St.

8th St.

Red River St.

Trinity St.

Waterloo Park

San Jacinto Blvd.

Lower Waller Creek



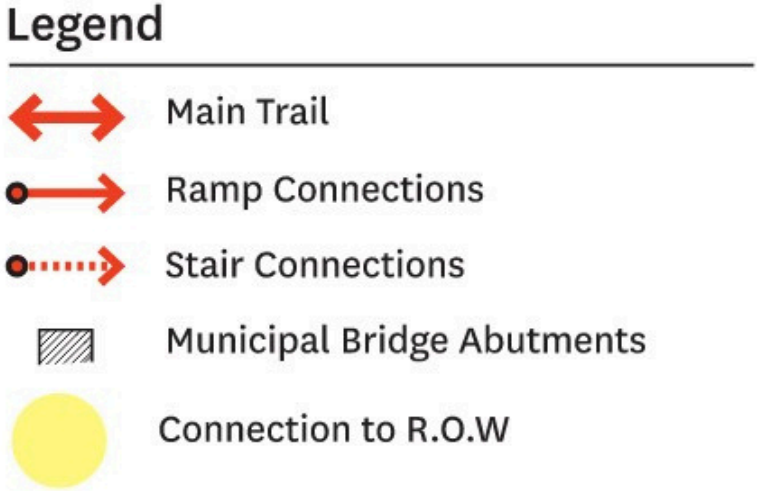
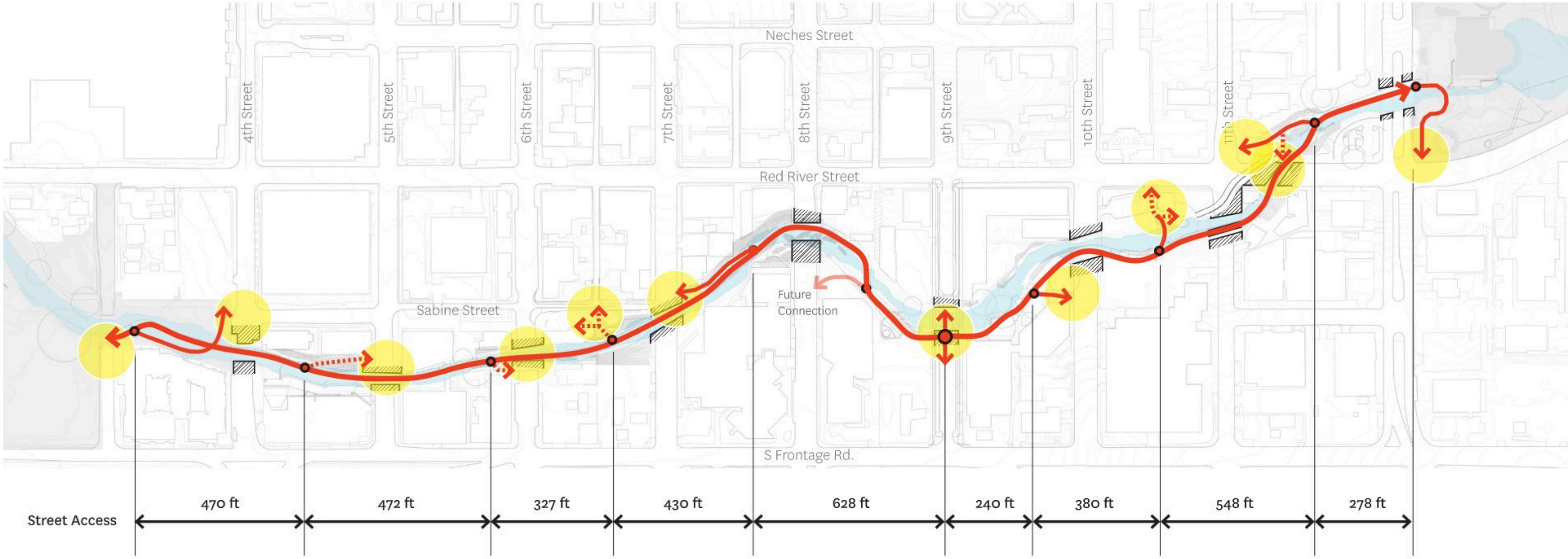
Chain of Parks and Creek Restoration



A Walkable District



Accessible and Safe Trail Network



Design Continuity



Overlooks and Places to Stop



Ecological Features



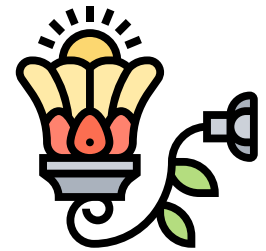
Elevated Walks and Furnishings

Community Discussion

Themes



Programming and Events



Lighting Strategy



Access to Water



Integration of Public and Private Spaces



Integration of Art

Programming & Events



Existing Conditions



Waller Creek at 10th St.



Symphony Square at 11th St. and Red River St.

Programming and Events



Quieter spaces to engage with nature and escape the city



Active, lively destinations for community programs and events



Mentimeter



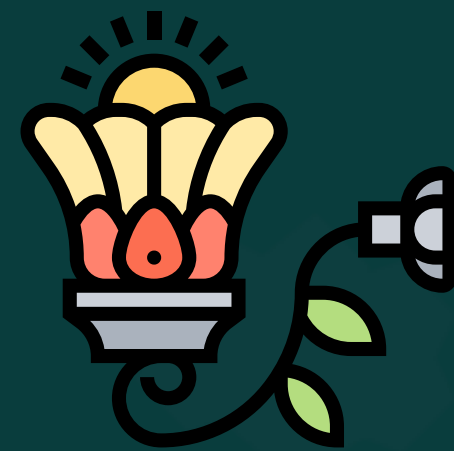
1. Scan QRCode
2. Enter Code
3. Give thumb-up when your in!



menti.com

1130 0917

Lighting Strategy



Existing Conditions



Waller Creek at 7th St.

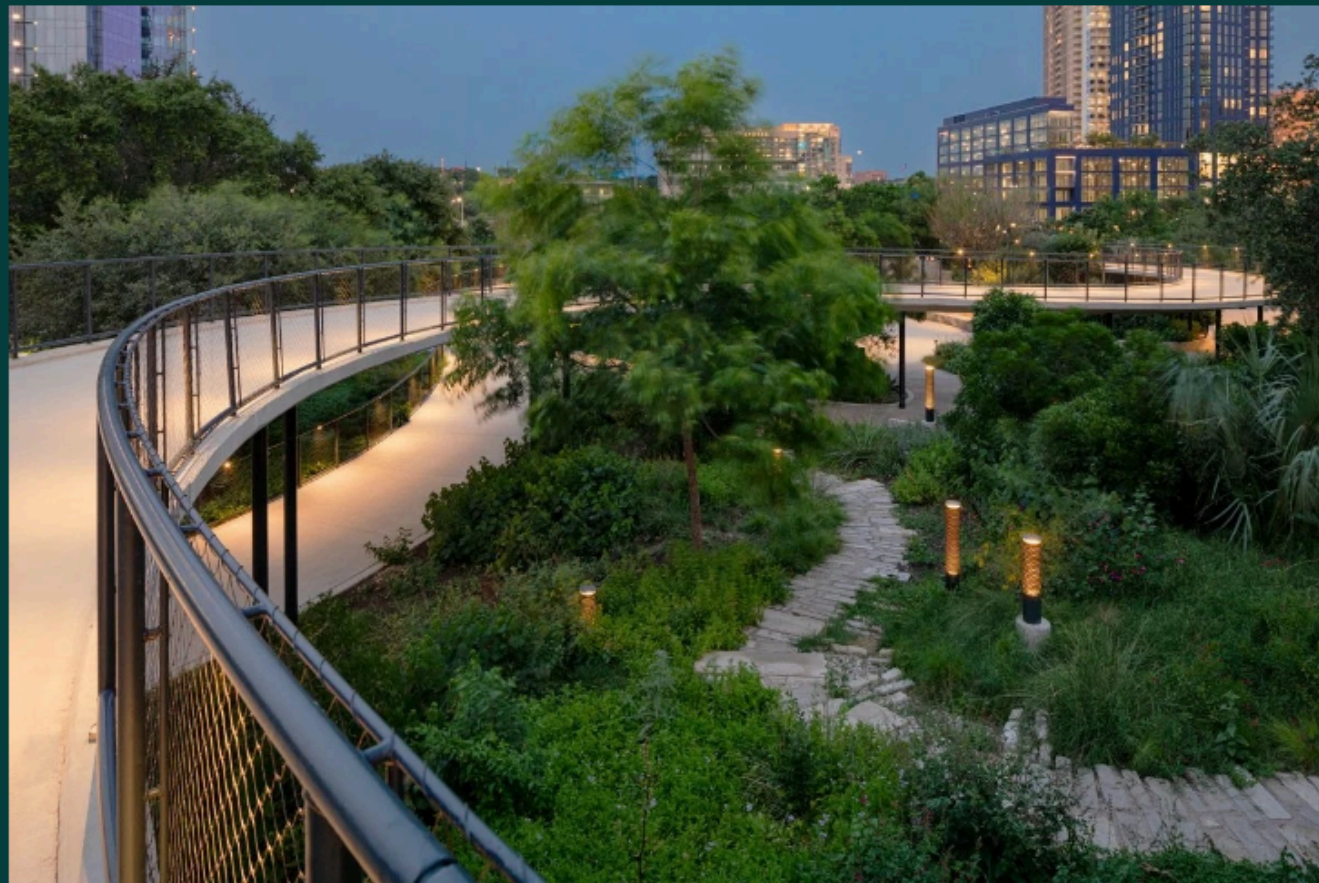


Sabine St. and 7th St.

Lighting



Lower lighting levels that are integrated into the landscape.



Unique and robust lighting that helps define a public gathering space



Access to Water



Existing Conditions



Waller Creek at 9th St.



Waller Creek at 12th St.

Access to Water



Design features that encourage access and engagement with Waller Creek



Trails and public spaces that manage access to Waller Creek



Integration of Public & Private Spaces



Existing Conditions



Waller Creek at 9th St.



Waller Creek at 12th St.

Integration of Public and Private Spaces



Public spaces are focused on immersion in nature with signage and connections to nearby private amenities



Public and private spaces are connected and integrated, creating a seamless transition



Integration of Art



Existing Conditions



Waller Creek at 6th St.



Waller Creek at 8th St.



Symphony Square

Integration of Art

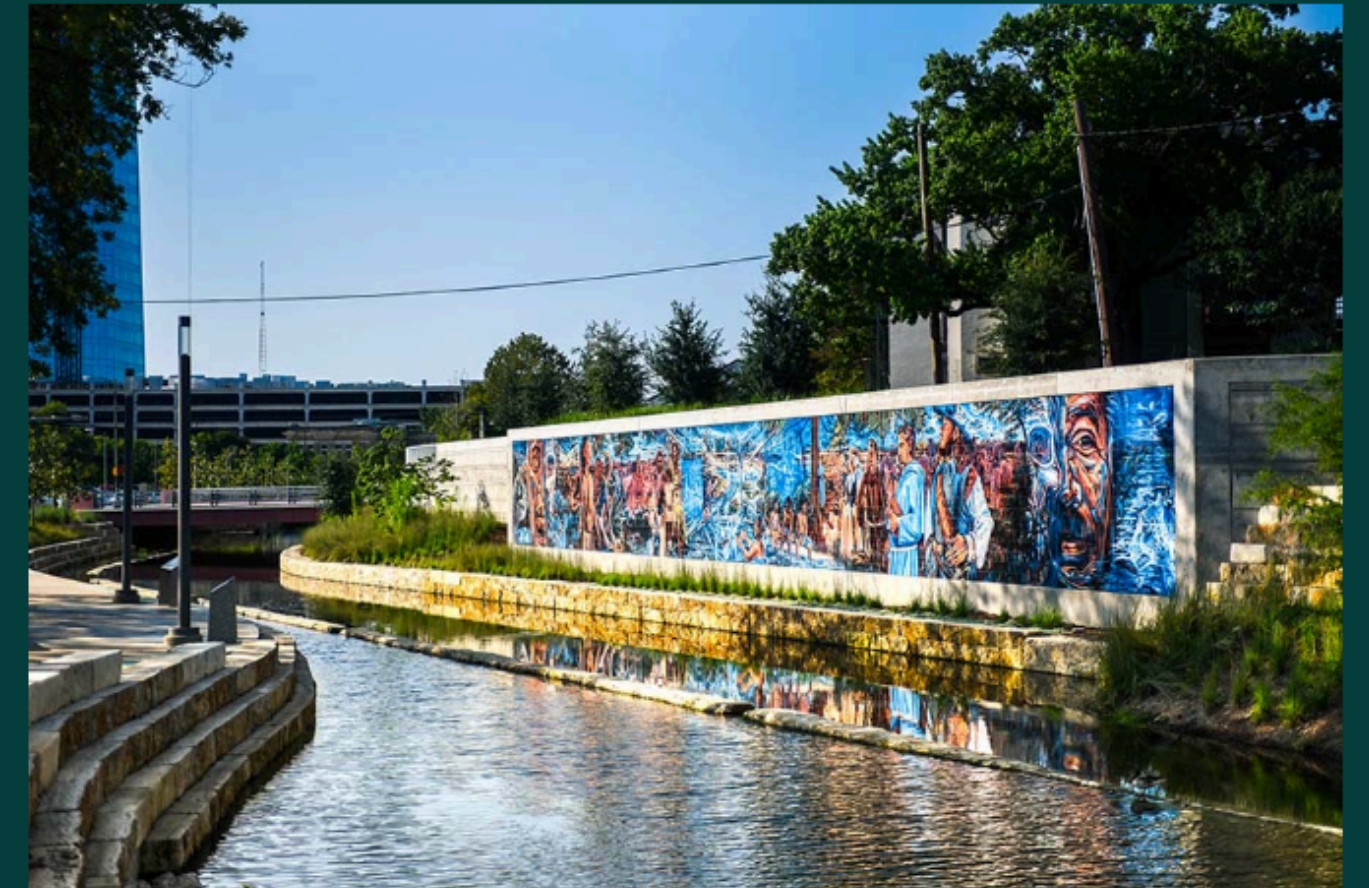


Adapted to the Completed Space

Fully Integrated as Part of the Project

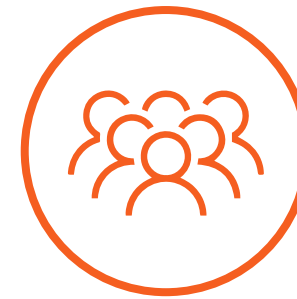
Artists work with the completed project and propose installations that respond to the park space

Art is integral to the features of the public space and installed at the beginning



Next Steps

Engagement Timeline



FEBRUARY

MARCH

APRIL

MAY

JUNE

JULY

SPRING 2027

**PROJECT
LAUNCH**

VIRTUAL MEETING

**WE ARE
HERE!**

COMMUNITY
SURVEY

SHARE
CONCEPT
RENDERINGS

START NEXT
PHASE OF
DESIGN

ADDITIONAL
COMMUNITY
MEETINGS



CONTACTS:

Melissa Ayala

Vice President for Government Relations

mayala@waterloogreenway.org

John Rigdon

Chief Planning & Design Officer

jrigdon@waterloogreenway.org

Thank you!